

ULEY 2 Reserves, Resources and Immediate Resource Expansion Paths

JORC 2012 Mineral Reserves and Resources

| Resource | Classification | Tonnes (kt) | TGC (%) | Density (t/m ³) | TGC (kt) |
|---------------------------|---------------------|--------------|-------------|-----------------------------|------------|
| Uley 3 | Inferred | 900 | 6.6 | 2.1 | 59 |
| | Uley 3 Total | 900 | 6.6 | 2.1 | 59 |
| Uley 2 | Measured | 800 | 15.6 | 2.1 | 125 |
| | Indicated | 4,200 | 10.4 | 2.1 | 435 |
| | Inferred | 1,300 | 10.5 | 2.2 | 137 |
| | Uley 2 Total | 6,300 | 11.1 | 2.1 | 697 |
| Uley Project Total | TOTAL | 7,200 | 10.5 | 2.1 | 757 |

Excluding the other mineralised envelopes (within EL 6224) the greater Uley deposit is a multi-generation project.

Priority 1 Short Term Ore Reserve extension

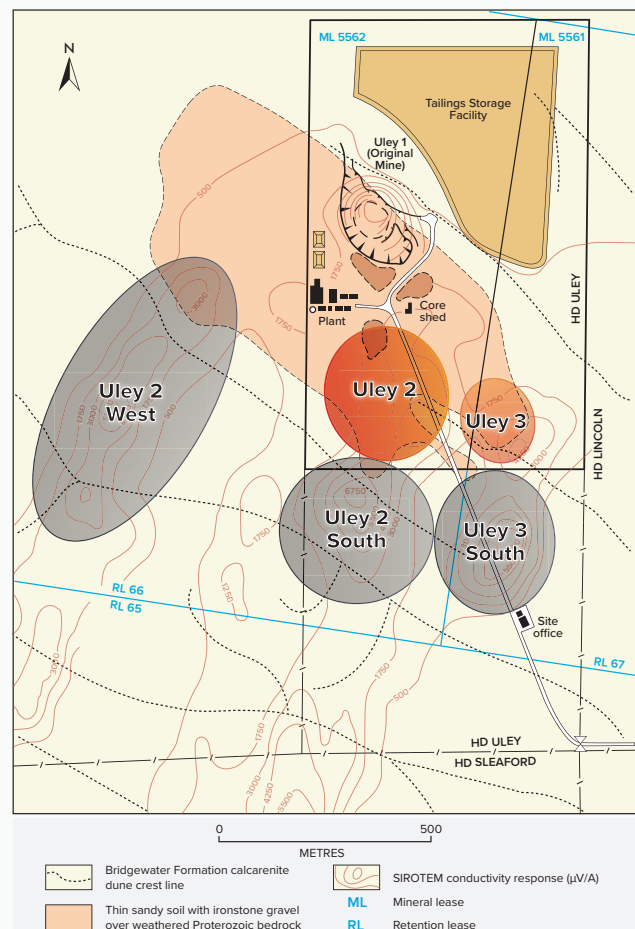
- Uley 2 South 50m
- Infill drilling at Uley 3

Priority 2 Medium Term Resource extension

- Uley 3 South
- Extension drilling to 50m-by-50m intervals

Priority 3 Long Term Resource extension

- Uley 2 West geophysical anomaly target
- Uley 2 South beyond Priority 1 along strike of the geophysical anomaly.



Uley 2 Ore Reserve and near-mine extension target priorities